

B3 - 113 | 3 BED | 2 BATH | SCULLERY

RESIDENTIAL SERIES

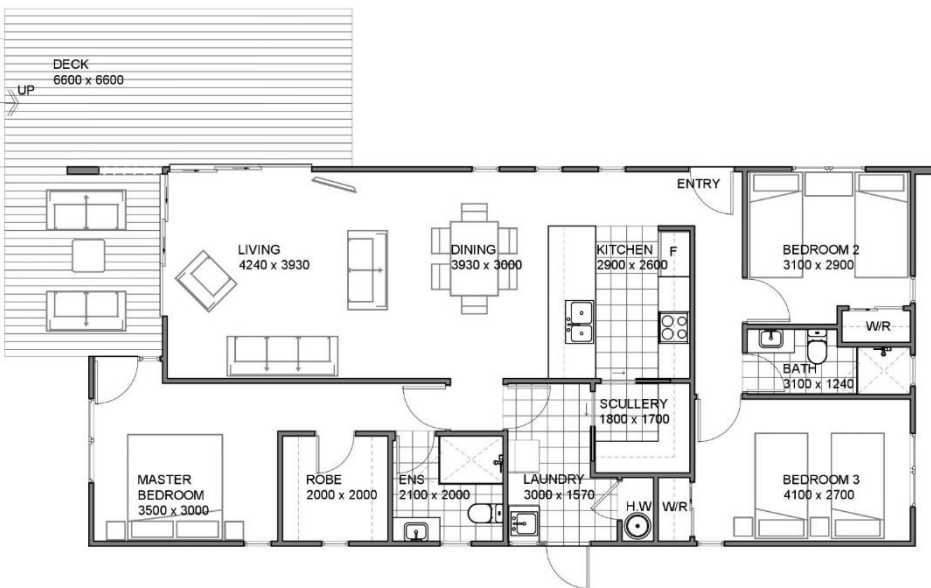


Artists impression only Gable roof
Monopitch available



Floor area: 113 m² (including Porch – 5 m²) Size: 15.7m x 7.2 m

Design led functionality, cost effectively



Building fit out is completed ready to connect to your onsite services.

Construction can be completed in as little as 8-10 weeks, plan dependent.

Cost estimate provided will be for building including:

- COC for building ex-factory
- Delivery within 40km radius of Auckland factory (extra km quoted)
- Standard foundations for the building to NZS 3604 (not deck).
- Estimate confirmed after site inspection.

Refer generic specifications and general inclusions & exclusions on the next page.

Talk to our team on 0800 460 307, or email enquiries@transbuild.co.nz to discuss your specific site requirements and then enable us to provide you with a no obligation project estimate.

Notes: Undercover porch included in building cost, full deck artists impression only. Pricing and specifications may change without notice.