

**B2 - 84 | 2 BED | 2 BATH**

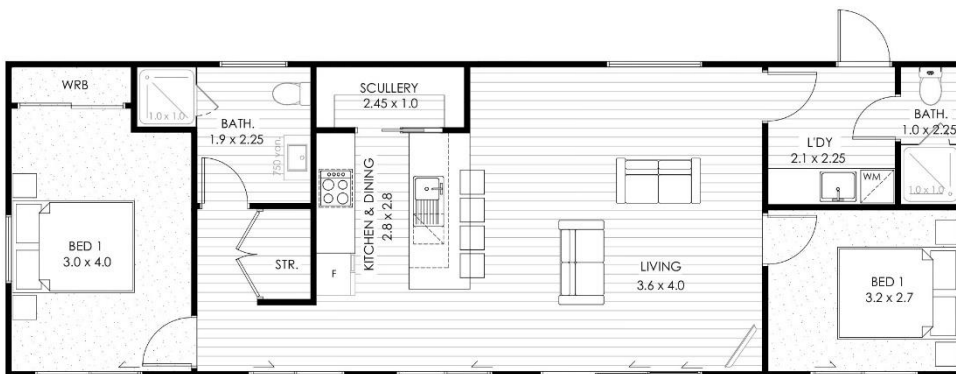
*RESIDENTIAL SERIES*



*Artists impression only*

2 | 1 | Floor area: 84 m<sup>2</sup> | Size: 16m x 5.25 m

**Wet gear anyone? Functionality in buckets for typical kiwi living.**



Building fit out is completed ready to connect to your onsite services.

Construction can be completed in as little as 8-10 weeks, plan dependent.

Cost estimate provided will be for building including:

- COC for building ex-factory
- Delivery within 40km radius of Auckland factory (extra km quoted)
- Standard foundations for the building to NZS 3604 (not deck).
- Estimate confirmed after site inspection.

Refer generic specifications and general inclusions & exclusions on the next page.