

B2 - 70 | 2 BED | 1 BATH

RESIDENTIAL SERIES



Artists impression only

2 | 1 | 1 Floor area: 70 m² Size: 15.2m x 4.6 m

**Small home and scale,
with a minimalist footprint.**

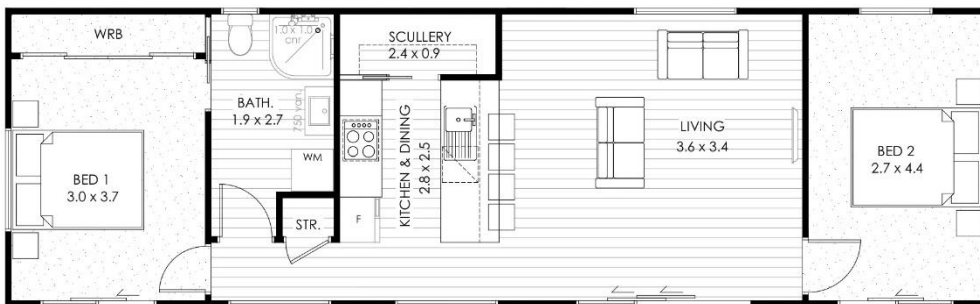
Building fit out is completed ready to connect to your onsite services.

Construction can be completed in as little as 8-10 weeks, plan dependent.

Cost estimate provided will be for building including:

- COC for building ex-factory
- Delivery within 40km radius of Auckland factory (extra km quoted)
- Standard foundations for the building to NZS 3604 (not deck).
- Estimate confirmed after site inspection.

Refer generic specifications and general inclusions & exclusions on the next page.



Talk to our team on 0800 460 307, or email enquiries@transbuild.co.nz to discuss your specific site requirements and then enable us to provide you with a no obligation project estimate.

Notes: Full deck artists impression only. Pricing and specifications may change without notice.