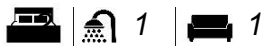


**B2 - 65 | 2 BED | 1 BATH**

*RESIDENTIAL SERIES*



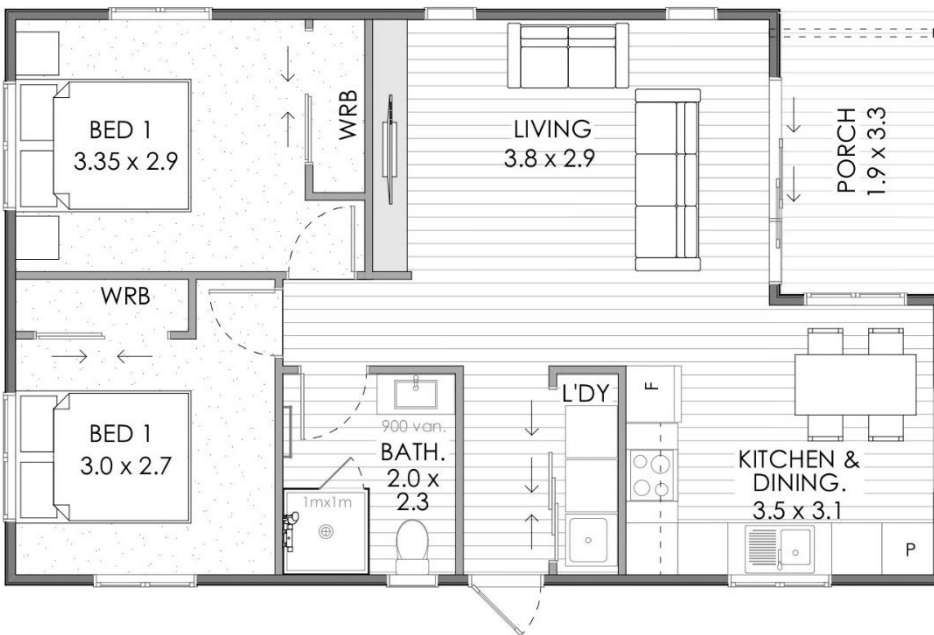
Artists impression only



Floor area: 71 m<sup>2</sup> (including porch - 6m<sup>2</sup>)

Size: 10.8m x 6.6 m

**Secondary dwelling, genius.**



Building fit out is completed ready to connect to your onsite services.

Construction can be completed in as little as 8-10 weeks, plan dependent.

Cost estimate provided will be for building including:

- COC for building ex-factory
- Delivery within 40km radius of Auckland factory (extra km quoted)
- Standard foundations for the building to NZS 3604 (not deck).
- Estimate confirmed after site inspection.

Refer generic specifications and general inclusions & exclusions on the next page.

Talk to our team on 0800 460 307, or email [enquiries@transbuild.co.nz](mailto:enquiries@transbuild.co.nz) to discuss your specific site requirements and then enable us to provide you with a no obligation project estimate.